



香港導盲犬協會 Hong Kong Guide Dogs Association

2015/16 Annual Report



Contents

Mission Statement	2
History	3
Chairman’s Report.....	4
Operations 2015/16	5
Guide Dog Production	
Puppy Raising Program	
Breeding Program	
Life Cycle of a Guide Dog	
Public Education	
Volunteer Training and Development	
Looking into the Future	15
Buddy/Companion Dog Program	
Training School	
Fundraising	17
Organization Chart	21
Board of Directors.....	22
Staff List.....	25
Financial Report.....	27
Acknowledgement.....	30
Appendix – Public Education (List).....	37
Organization Information.....	40



Introduction and Justification for a Guide Dog Program in Hong Kong

Guide Dogs are professionally trained working dogs being provided to persons with visually impairment who choose to benefit from the enhanced mobility, safety and companionship that guide dogs can provide.

Hong Kong monthly digest of statistics for December 2014 indicated over 170,000 persons with visually impairment, i.e. 2.4% of the population. Internationally, guide dog schools receive applications for training with guide dogs from approximately 1% of the visually impaired population. Therefore, estimated demand for a guide dog in Hong Kong over the long term is approximately 1,700 persons.



Registered Charity No. 91/11219



Our Mission

Hong Kong Guide Dogs Association supports safe, dignified and independent living of people with visual impairment through the provision and use of professionally trained guide dogs.

We advocate a barrier free society in ensuring that all necessary legislation and rights for persons with visual impairment and their guide dogs are upheld.

We are committed to raising the awareness of guide dogs to the general public.

History

In June 2011, Hong Kong Guide Dogs Association (HKGDA) has registered itself as a charitable organization in Hong Kong (Registration Number 91/11219).

The first four guide dogs from an internationally accredited school were introduced into Hong Kong by the **4 Users 4 Guide Dogs Pilot Project**. Funded by the S.K. Yee Foundation in March 2011, this project was organized by the Ebenezer School and Home for the Visually Impaired, the Hong Kong Society for the Blind and supported by HKGDA. Our sincere gratitude goes to Guiding Eyes for the Blind, USA who provided the guide dogs and related services to the benefactors of this project.

Following the successful completion of the 4 Users 4 Guide Dogs Pilot Project in 2013, HKGDA received financial support from the Lee Hysan Foundation, as well as other donors such as Link Foundation, AWA, HSBC Trustee plus fundraising events (see Appendix 1). These funding allowed the organization to start a professional team, including the engagement of an experienced professional from overseas and sending two Trainee Guide Dog Mobility Instructors for training in UK as well as the hire of a local Puppy Raising Supervisor.

HKGDA is an applicant member of the International Guide Dog Federation (IGDF) with a goal of full membership by 2017.



We emphasize the need to follow international guidelines and standards, which is very important because this will ensure the success of the implementation of our program that is of quality and is safe. HKGDA has on day one of its establishment worked towards the goal of getting full membership from the IGDF. We envisage that this attainment can be achieved by 2017 when we will have trained sufficient numbers of dogs and users to meet the requirement. Most reputable and established guide dog schools around the world are members of this Federation. Any organization who sees to a successful long term development of its mission as a guide dog school and center should strive to achieve along these lines. Some of the guide dogs now in use in Hong Kong are off-springs of parents of over 10 or more generations of guide dogs. The long established experiences and programs of many guide dog schools worldwide are important backup for HKGDA in our development. It is essential that a proper establishment be set up, which should have its own proper training facilities that can provide a safe and suitable environment for the training and breeding of our own guide dogs in the fut



Chairman's Report

I have great pleasure to report to you the works of HKGDA in the year 2015/16. We celebrated our 5th Anniversary with a number of successes. Namely the graduation of our first two teams of locally trained guide dogs Anna and Bella. They have brought great joy and enabled much more independent living to their users. In celebration we held our graduation in Hong Kong Disneyland with nearly 200 volunteers and members with visual impairment cheering the occasion in the presence of Mickey and Goofy. We held our first ever HKGDA Golf Tournament and Charity Walk and managed to raise \$1.5 million for our operation. The "Centaline U & Me Come Charity Walk" was held on one of the coldest day in Hong Kong ever in January in 30 years. We are very blessed as we were wrapped in love with over 200 volunteers and participants in support of the function.

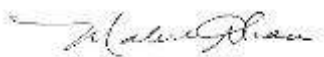
In 2015/16 we have been raising 9 puppies, training 5 dogs plus the importation and raising of a brood bitch for our local breeding program. This has been the busiest year ever in the history of HKGDA. We are looking forward to the graduation of at least 6 teams of guide dogs and the breeding of our own local puppies by the end of 2016.

We managed to reach out to nearly 80,000 members of the public including school students from kindergarten to universities, operation staff of facilities and human resource personnel, politicians, civil servants and the general public in an effort to promote guide dog development and the mission of an inclusive barrier free society for all. We appeared in over 70 radio programs, TV shows, news and printed media during the year reaching out to tens of thousands of audience in Hong Kong. A news interview about our puppy raisers in January logged nearly 800,000 views in 3 months' time. We managed 2 facebook as well as supported facebook of Deanna our first guide dog and the average monthly click of these facebook continue to be on the rise and averaged over 15,000 views in a month.

Part of our successes rest with the fact that we have been able to count on the support and assistance of many of our 400 volunteers thus far. We have a core team of volunteers who acted as our puppy raisers and boarders/foster families. We have a core team of nearly 20 puppy raisers and boarders who worked tirelessly during the year to raise our puppies to until 14 months of age whereby they will then be taken over by the boarders during their guide dog training period. This is a demanding job in terms of physical and emotional output but nonetheless joyful experience for our raisers and boarders. Together with our other volunteers they contributed in total no less than 30,000 hours of meaningful work to HKGDA and the public. We are truly grateful to all of them for their commitment, dedication and contribution.

HKGDA relies 100% on donations to provide our services to those in need. Lee Hysan Foundation has been most generous in supporting our work since inception. This support has enabled HKGDA to set up a good foundation by engaging professionally qualified personnel for our work thus ensuring the safe use of guide dogs by our users that meet international standards. This is the second year of Link Foundation's support, which enabled us the purchase of a brood bitch for the start of our breeding program as well as the many public education and outreach activities to the communities in Hong Kong. To all the donors, sponsors and supporters I wish to extend our most sincere gratitude for their most generous and unfailing assistance.

We are mindful that our work requires the support of many of the organizations serving people with visual impairment. I am happy to report to you that nearly all of the organizations who are serving people with visual impairment are joining us as our associate members. We welcome you all and we look forward to our close collaboration in working together for the advancement of the welfare of people with visual impairment and an inclusive society for all.



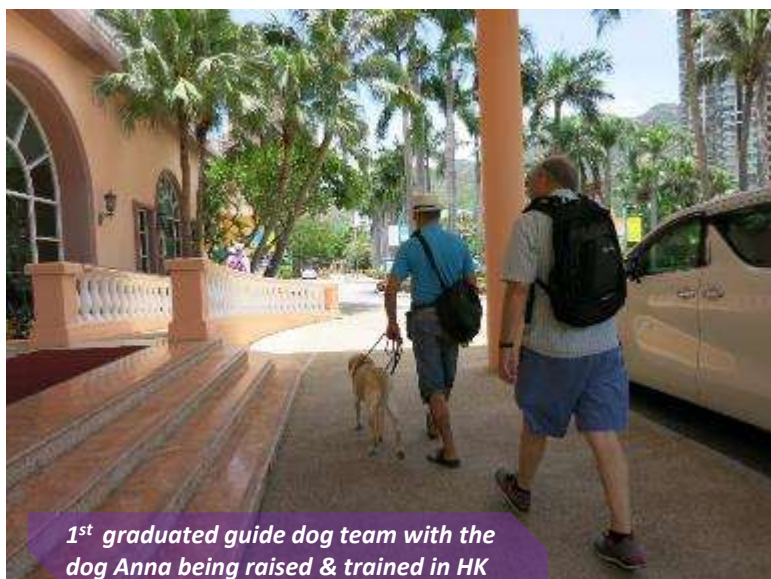
Mabel Chau
Chairman



Guide Dog Production

In September 2015 and March 2016, Hong Kong Guide Dogs Association (HKGDA) is proud to announce our first two guide dog teams' graduation. Both guide dogs Anna and Bella were raised, trained and successfully matched with two users. An official graduation ceremony was held on 29 March 2016 at Hong Kong Disneyland.

In 2016, our goal is to have six more guide dog teams.



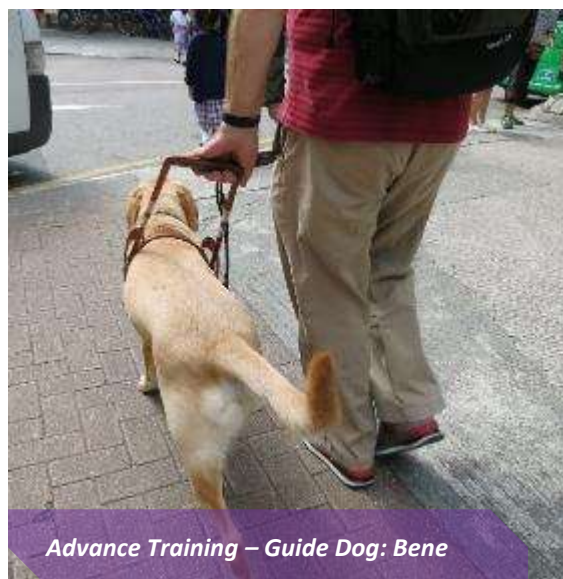
1st graduated guide dog team with the dog Anna being raised & trained in HK



1st graduation celebration with puppy raiser & HKGDA team



Obstacle work – Guide Dog: Bella



Advance Training – Guide Dog: Bene

HKGDA 1st Graduation at Disney Theme Park

An official graduation ceremony was held on 29 March 2016 in Hong Kong Disneyland.



Guide Dogs Anna and Bella together with Mickey and Goofy



HKGDA 1st Graduation Ceremony



Anna and Bella with their trainers and user



Puppy Raising and Fostering

There were nine puppies in the puppy raising program and five dogs in training.

During 2015, HKGDA has received eight puppies from international guide dog breeding programs and all these puppies are sponsored by the LINK FOUNDATION. In January 2016, we have three donated puppies from Taiwan and USA respectively.

We are aiming and moving towards our local breeding program in 2016/17. Meanwhile, donation or purchase of puppies from established guide dog breeding programs will continue.

HKGDA held regular Puppy Raising Seminars to promote, educate and recruit volunteers, and have been fortunate to have over 20 dedicated Puppy Raisers/Families so far who helped in raising the puppies until they are around 14 months old.

Through the support also of many dedicated volunteers we managed to arrange temporary home stay for the puppies who were of age and ready to be trained as guide dogs.





Breeding Program

The purchase of the first Brood Bitch for Hong Kong Guide Dogs Association (HKGDA) has been confirmed within the year and arrived Hong Kong in May. Our first brood bitch, a female Black Labrador Retriever named 'Fleur' is a 'maiden bitch' which means she has not delivered puppies previously.

Plans have been made to send our local volunteer veterinarians overseas for training in trans-cervical insemination as well as to invite overseas schools to assist in the set up of a breeding program.

The HKGDA breeding program 2015/16 was funded by Link Foundation. Our goal is to acquire three to four breeding animals by 2018. We are awaiting for the first batch of local born puppies by 2016/17.



A Guide Dog's Life



Operation 2015/16

Public Education

An important part of our missions is to garner support from the people of Hong Kong and to raise awareness of guide dogs to different corporations, public services, and the general public. To that end, Hong Kong Guide Dogs Association (HKGDA) has conducted 95 public education programs in schools and other organizations as part of our community awareness campaign during 2015/16.

We have been fortunate to receive a Grant from the 'Link Together Initiatives' which provided funding for our public education program. We delivered educational seminars in schools and the community that reached nearly 76,975 students and the general public.

HKGDA regularly attends public and community events where we are able to integrate our program into local communities. We have appeared in 143 media interviews, shows and presentations in 2015/16.



Public Education

Promotional Material

Easy Banner

導盲同行 只此一家

當你在路上遇見導盲犬.....
When you encounter a guide dog on the street...



三不
1. 不要與導盲犬交談或逗弄牠。
2. 不要觸摸導盲犬。
3. 不要餵食導盲犬。
一視
1. 導盲犬是工作犬，不是寵物。
2. 導盲犬是導盲工具，不是玩具。

Three Don'ts
1. Don't talk to or play with the guide dog.
2. Don't touch the guide dog.
3. Don't feed the guide dog.

One Do
Do Engage in a polite conversation with the guide dog's handler.

利華基金會
LEE HUI SAN FOUNDATION
請支持我們! Please support us!
捐款請電: 2361 1111 | 捐款請電: 2361 1111
地址: 香港中環皇后大道中15號
利華基金會秘書處

導盲同行 只此一家

看不到，一樣去得到。



當你在路上遇見導盲犬.....
When you encounter a guide dog on the street...

三不
1. 不要與導盲犬交談或逗弄牠。
2. 不要觸摸導盲犬。
3. 不要餵食導盲犬。
一視
1. 導盲犬是工作犬，不是寵物。
2. 導盲犬是導盲工具，不是玩具。

Three Don'ts
1. Don't talk to or play with the guide dog.
2. Don't touch the guide dog.
3. Don't feed the guide dog.

One Do
Do Engage in a polite conversation with the guide dog's handler.

請支持我們! Please support us!
捐款請電: 2361 1111 | 捐款請電: 2361 1111
地址: 香港中環皇后大道中15號
利華基金會秘書處



Mickco, a Fashion
Illustrator, who designed
this new icon for HKGDA

MTR Ad - 8 Jan - 21 Jan 2016

利華基金會 LEE HUI SAN FOUNDATION



香港導盲犬協會 Hong Kong Guide Dogs Association

看不到，一樣去得到



關愛同行2016慈善步行籌款 | 地點: 大埔船灣淡水湖堤壩
U n Me Dog Come Charity Walk 2016 | 日期: 2016年1月24日

Tel: 3188 1736 | 網頁: www.guidedogs.org.hk | 電郵: info@guidedogs.org.hk | HKGDA



Media Interviews



Media Interviews



導盲犬協會參展 歡迎社會支持

2013-08-20 12:18:00 香港

核心提示：第二屆「導盲犬普及化與公眾化」論壇將於八月廿四日舉行，邀請了全港社會服務機構、導盲犬協會及多間政府部門共同參與。論壇旨在提高社會對導盲犬的認識，並加強與公眾的聯繫。論壇將於下午二時開始，歡迎各界人士參加。



八導盲幼犬或可入商場

領展與香港導盲犬協會合作，透過「愛心引路」社區關愛計畫，引進八隻導盲犬服務視障人士，可進出旗下大部分商場（見圖）。主席蘇志樹指，計畫支援領展商場內商場社區，相信長遠能提升商場表現。領展已向旗下商戶介紹導盲犬理念，指商戶反應正面。

該八隻導盲犬幼犬已抵港，將會在義家庭進行生活訓練，預計最快一年後正式投入服務。香港導盲犬協會在今年十二月，亦會首次引進導盲犬媽媽，將在港產子。香港導盲犬協會表示，現時導盲犬法例不涵蓋導盲犬幼犬，牠們不能於公園及公共交通工具進出，限制活動範圍，促進公共文匯營商及商場理解導盲犬的訓練需要。

港17萬名視障人士只20隻導盲犬
8幼導盲犬抵港展本土化

導盲犬使用與否與黃訓導盲犬協會的香港區都係表示，近年視障人士對牠們認識多了，不會只覺得牠們是小狗。雖然據統計顯示，香港視障人士有17萬名，但只有20隻導盲犬。香港導盲犬協會上月再從海外引進8隻幼犬，預計最快到明年後投入服務。

香港導盲犬協會在2011年獲信引入導盲犬，除了伴同視障人士「開一對眼」，協助他們過關，安全引路外，更給予他們心理慰藉。或為其日常生活帶來便利。

導盲犬成黑暗中光明

10幾年前有隻盲童與狗相依，9年前完全失明，到2012年獲配導盲犬Nana代替平時以導盲犬。她笑言Nana是她走出黑暗生活，令她安心行進一步。當她由信到Nana時，她感到安心與快樂。由最初10公里開始，再慢慢增加，成為導盲犬Nana的「主人」。9年前完成。



導盲犬工具讓牠們進步

製牛和大部分港人並未理解導盲犬對視障人士的重要性，Nana的訓練員表示，導盲犬是視障人士的「眼睛」。Nana的訓練員表示，導盲犬是視障人士的「眼睛」。Nana的訓練員表示，導盲犬是視障人士的「眼睛」。



導盲犬工具讓牠們進步

製牛和大部分港人並未理解導盲犬對視障人士的重要性，Nana的訓練員表示，導盲犬是視障人士的「眼睛」。Nana的訓練員表示，導盲犬是視障人士的「眼睛」。



導盲犬工具讓牠們進步

製牛和大部分港人並未理解導盲犬對視障人士的重要性，Nana的訓練員表示，導盲犬是視障人士的「眼睛」。Nana的訓練員表示，導盲犬是視障人士的「眼睛」。



8.8.2013 Wed | abcnews.hk

領展導盲犬 最快明年出征

Nana也無辜被搶走「野狗」引路，引路犬最快明年出征。

「野狗」引路，導盲犬最快明年出征。Nana也無辜被搶走「野狗」引路，引路犬最快明年出征。

「野狗」引路，導盲犬最快明年出征。Nana也無辜被搶走「野狗」引路，引路犬最快明年出征。

Volunteer Training and Development

Hong Kong Guide Dogs Association (HKGDA) provides training and support to volunteers, such as puppy raising, care of guide dogs, guide dog etiquette, public speaking skills, mobility assistance to persons with visual impairment, etc. In turn, our volunteers offer various areas of assistance:

Public Speaking	- Providing educational seminars
Promotion	- Attending public events
Administration	- Assisting with financial & clerical tasks
Fund Raising	- Attending fund raising events
Puppy Raiser	- Raising puppies from 8 weeks to 14 months of age
Boarder	- Taking care of puppies or dogs in training for temporary periods

We also receive support from volunteers who have expertise in the areas of:

- IT support
- Legal advice
- Translation service
- Transport for dogs and events
- Design and production
- Public relations and corporate communication

We currently have over 400 volunteers assisting in our programs contributing to over 30,000 hours of work during the year.



Volunteers in training



Volunteer Training Session



Volunteers at HKGDA events

Looking into the Future

Buddy/Companion Dog Program

The establishment of Buddy Dog and Companion Dog programs are based on the belief that HKGDA is able to provide dogs that can make positive differences in a needed person's life.

Based on global indication that only about 50% of all dogs raised and trained as guide dogs will graduate at the end of the day as guide dogs, suitable placement of these well trained dogs as buddy or companion dogs will benefit children with disabilities, seniors and people who are institutionalized due to care needs or sickness.

All dogs from our program that will not be used as guide dogs will be assessed for placement as Buddy or Companion dogs.



Looking Into the Future

A Guide Dog Training and Development Centre

In order to further develop the guide dog programs that meet the expected demands and international standards, a permanent facility with specialized facilities is required.

The Training Center is expected to serve the purposes of :

- A training venue for dogs and users
- A kennel for housing of dogs
- A kennel for breeding of dogs
- A training and resource center for puppy raisers, foster families, volunteers, and users
- A visitor and education center for the public
- Headquarter of Hong Kong Guide Dogs Association (HKGDA)

Moreover, the training center will also serve as a place for public education and dog welfare promotion. Whilst HKGDA will not be getting into regular dog training, we envisage our role to be an educator of social inclusion as well as animal welfare through our various activities to the public.

HKGDA is currently seeking support from government, foundations and corporates especially in locating a site and building a facility that will meet this important need.



Kennel exterior



Kennel dog run area



Kennel interior

Fundraising 2015/16

Financial donations and sponsorship of goods or services are vital in ensuring continuity and sustainability of service to meet our future needs.

In 2015/16, we successfully held 'Name a Puppy Campaign', 'HKGDA Charity Golf Tournament 2015' and 'Centaline You and Me Dog Come Charity Walk 2015' which raised over \$1.5 million.

The Lee Hysan Foundation continued to provide important backbone support for the development of our professional guide dog training and puppy raising programs. The Link Foundation enabled the purchase of a brood bitch and extension of the public education program to the community.

HKGDA relied 100% on donations from foundations, corporates and the community at large.

Event Highlight



Hong Kong Aviation Capital Cocktail



Link Together Initiatives Award



Charity Concert



Pet Show @Kai Tak Cruise Terminal

Fundraising 2015/16

Event Highlight



Guide Dog Family Fun Day



Guide Dog Summer Fun Day



Aesop Fund Raising Event



Diocesan's Boy School Garden Fete



Fund Raising 2015/16

5th Anniversary Event - Centaline U n Me Dog come Charity Walk 2015



Mr. Matthew Cheung officiating at Charity Walk 2016



Please come we are waiting for you at Tai Mei Tuk



Wrapped in love and warmth



Coldest Day in January with over 200 enthused walkers and volunteers



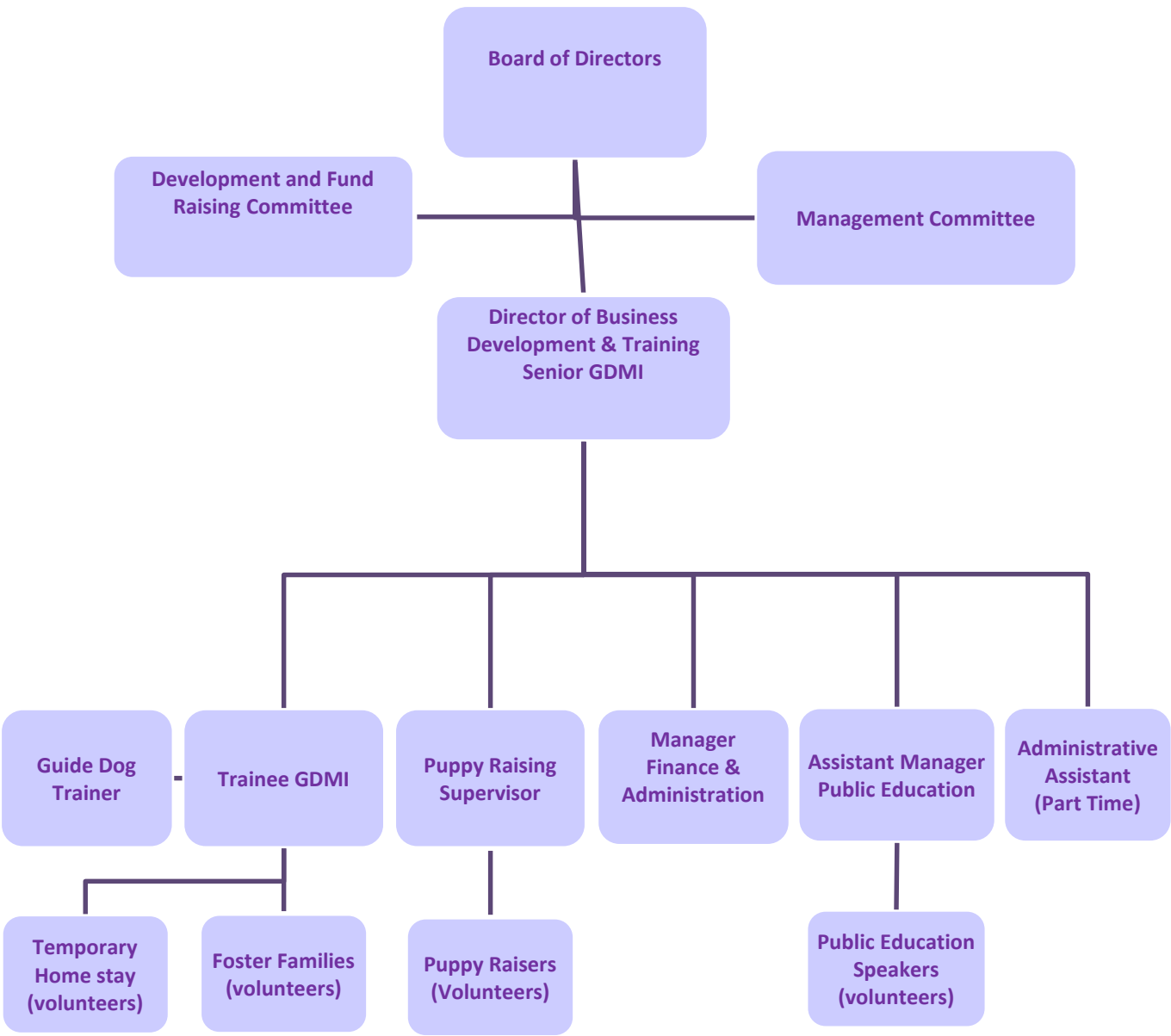
Guide Dog Donation Box Program

A guide dog donation box program provided the public an opportunity to make small but meaningful donations. We have placed over 100 collection boxes throughout Hong Kong at Café de Coral, Taste of Asia and Dogaroo Group and PuraPharm (Nong's Chinese Medicine Clinic), Grand View Digital, Kayaki as well as individual shops.

Our official website provides two types of fund raising channels. Making online donation via the link http://www.guidedogs.org.hk/en_donate.php, or purchasing our saleable items via the link http://www.guidedogs.org.hk/en_shop.php.



Organization Chart



Governance

Hong Kong Guide Dogs Association (HKGDA) is governed by a Board of Directors with members elected for their professional backgrounds and desire to support the development of guide dog services in Hong Kong.



Chau Man Ki, Mabel
Chairperson
Board of Directors



Tsang Kin Ping
Vice Chairperson/Founding Member
Board of Director
(President, Retina Hong Kong)



Chi Tan Ning, Fianna
Chairman of Committee on Development and Fund Raising
Board of Directors
(Council Member of Hong Kong Society for the Blind)

Board of Directors

Prof. Wong Sai Hung, David

*Member/Founding Member/Past Chairman
Board of Directors*

Kitty Cheung

*Hon. Secretary
Board of Directors*

Dr. Li Kai Wang, Kenneth

*Hon. Treasurer
Board of Directors
(Hon. Medical Adviser of the Council of the Hong Kong Society for the Blind)*

John Barnes

*Member
Board of Directors*

Chong Chan Yau

*Member/Founding Member
Board of Directors
(President of Hong Kong Blind Union)*

Lam Wai Pong

*Member
Board of Directors
(Council Member of the Hong Kong Society for the Blind)*

Li Ka Sum, Amy

*Member/Founding Member
Board of Directors*

Advisors and Associate Members

Advisors	Ms. Alice Yuk CEO Ebenezer School and Home for the Visually Impaired
	Mrs. Maureen Tam CEO Hong Kong Society for the Blind
Honorary Legal Advisor	Mr. Alex Liu (since June 2016)
Honorary Veterinarian	Dr. Owen Swan (since June 2016)
Associate Members	Ebenezer School and Home for the Visually Impaired
	Hong Kong Blind Union
	Hong Kong Federation of the Blind (since May 2016)
	Hong Kong Lutheran Social Service (since May 2016)
	Hong Kong Retina Association
	Hong Kong Society for the Blind

Staffing

Hong Kong Guide Dogs Association (HKGDA) engaged a team of professional staff who undertook the operations and management.

In 2016, our two Trainee Guide Dog Mobility Instructors (will) have returned from UK, one in January and one in April, after spending two full years in their professional and intensive training. They will continue and complete their final year training locally in Hong Kong under the guidance of a senior Guide Dog Mobility Instructors (GDMI).

A Guide Dog Trainer has been hired since February 2016.

Operation Team



Director of Business Development and Training
Brian C. Francis

Since September 2013, HKGDA has employed the services of Mr Brian Francis, a GDMI with 40 years' experience who also has program management experience. Brian is the **'teacher of the teachers'**. Currently, Mr Brian Francis is the only GDMI in Hong Kong qualified to teach other GDMIs. Brian was appointed as an Assessor for the International Guide Dog School Federation between 2011-13.



Puppy Raising Supervisor
Miss Chan Wing Chee, Fish

Fish was trained in an established guide dog school in Australia as a Puppy Raising Supervisor. Her responsibilities include the recruitment, training and supervision of volunteer Puppy Raisers who raise our puppies from 8 weeks of age to 14 months when they are ready to begin their formal guide dog training. During the puppy raising process, Fish monitors the puppy's development and advises on the socialization and training phases appropriate for each puppy.



Trainee Guide Dog Mobility Instructor
Miss Wu Ching Yee, Cherrie

Cherrie is a graduate of the University of Brighton, UK majoring in International Hospitality Management. She is currently undertaking the three year training program to become a Guide Dog Mobility Instructor. For the first two years of this training Cherrie was trained at the Guide Dogs for the Blind Association in the UK and since January Cherrie has returned to Hong Kong to complete the final year of her localized training.

Staffing

Operation Team



Trainee Guide Dog Mobility Instructor

Mr. Poon Kwok Wai, Garrick

Garrick is a graduate of the University of Berkeley, California majoring in Industrial Engineering and Operation Research. He is currently undertaking the three-year training program to become a Guide Dog Mobility Instructor. For the first two years of this training Garrick received training at the Guide Dogs for the Blind Association in the UK and Garrick has since returned to Hong Kong in April to complete her third year localized training in Hong Kong.



Guide Dog Trainer

Colin Yu

Colin is a graduate of the Lingnan University, Hong Kong majoring in Marketing.

Finance and Administration Team

Manager, (Finance & Administration)

Ng Siu Mui, Stella

Stella is a Bachelor degree holder from the Curtin University of Technology, Australia majoring in Accounting and Accounting Technologies. She also is the member of CPA Australia and HKICPA. She is having more than 25 years management experience in Finance and Administration area

Assistant Manager (Public Education)

Cheung Hei Man, Eamon

Administrative Assistant (Part Time)

Emily Tse

2015/16 Financial Report

INCOME AND EXPENDITURE ACCOUNT

	Total From 2015.01.01 to 2016.03.31 HK\$	Total From 2014.01.01 to 2014.12.31 HK\$
Income		
Donations income	4,735,476	3,305,899
Sales and other fees income	397,347	235,170
Government grants	20,000	41,260
Membership fees income	1,200	900
Bank interest income	94	41
Total Income	5,154,117	3,583,270
Expenditure		
Auditors' remuneration	12,000	12,000
Bank charges	10,330	2,454
Courier and postage	2,682	2,544
Depreciation	79,641	
Dog care expenses	326,923	144,067
Donation Paid	1,000	500
Electricity and water	15,865	2,376
Event Expenses	283,658	192,950
Hire Purchase interest expenses	3,923	
Insurance	26,196	20,617
Messing	6,052	
Motor vehicle expenses	55,775	
MPF employer contributions	84,921	34,780
Printing and stationery	43,541	11,739
Purchase for mini store	33,859	201,153
Recruitment expenses	3,701	
Rental expenses - office	135,000	36,000
Trainer and trainee-staff quarters	243,250	192,000
Salaries and allowances	1,873,095	1,123,792
Secretarial expenses	2,305	2,305
Seminar and training - local	4,795	3,350
Seminar and training - oversea	803,475	882,173
Subscriptions and memberships	8,772	5,210
Sundries	11,947	6,514
Telecommunication	7,770	2,591
Travelling and transportation - local	99,875	73,402
Travelling and transportation - Overseas	51,867	145,016
Volunteer expenses	20,300	16,000
Web site and software expenses	25,501	8,000
Total Expenditure	4,278,019	3,121,533
Surplus for the period	876,098	461,737

Remark : We change the Financial Year from Jan 1 – Dec 31 to Apr 1 – Mar 31.

So the Financial Year for 2014 is 2014.01.01 – 2014.12.31 , totally 12 months

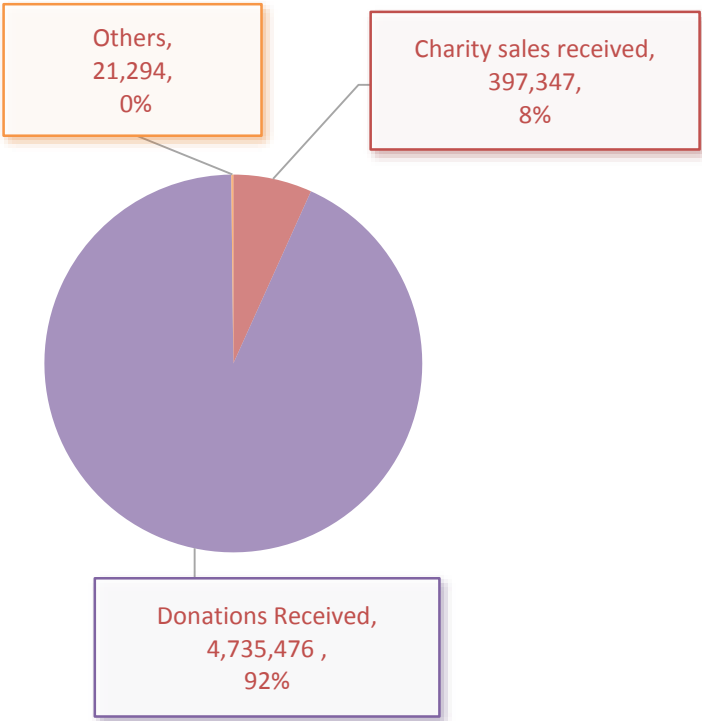
The Financial Year from 2015/2016 is from 2015.01.01 – 2016.03.31, totally 15 months

2015 Financial Report

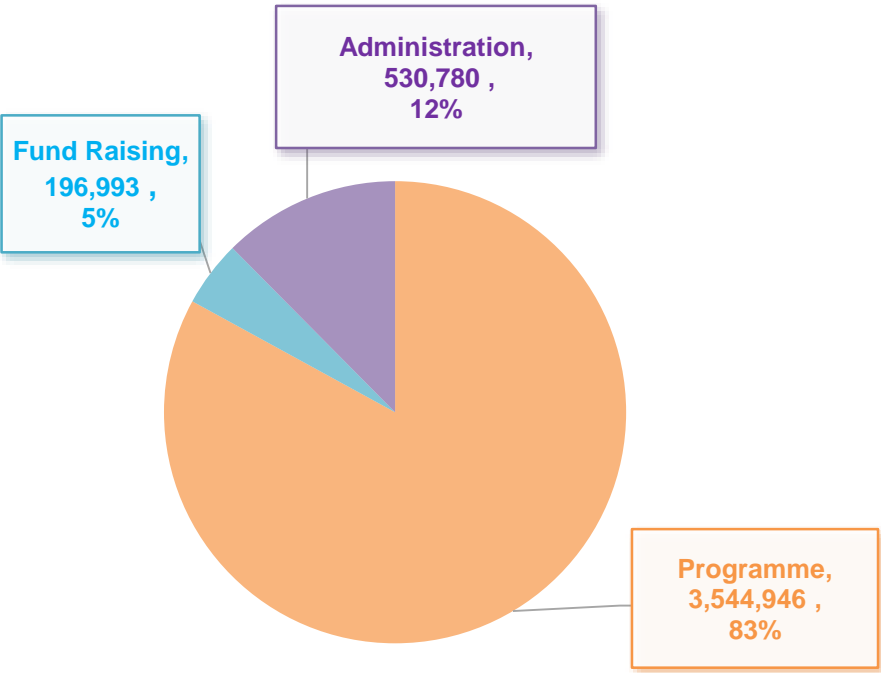
STATEMENT OF FINANCIAL POSITION

	As at 2016.03.31	As at 2014.12.31
	HK\$	HK\$
<u>Non-current assets</u>		
Property, plant and equipment	159,282	
<u>Current Assets</u>		
Prepayment and deposits paid	60,050	56,150
Other receivables	300	
Cash and cash equivalents	3,515,639	2,685,778
	3,575,989	2,741,928
<u>Current Liabilities</u>		
Bank overdraft		17,333
Accruals expenses	28,022	39,902
Obligations under finance leases	47,500	
	75,522	57,235
Net Current Assets	3,500,467	2,684,693
<u>Long Term Liabilities</u>		
Obligations under finance leases	98,958	
Net Assets	3,560,791	2,684,693
<u>Equity</u>		
General Fund	2,058,525	1,174,572
Designated Fund	1,502,266	1,510,121
	3,560,791	2,684,693

Income



Expenditure



Acknowledgement

A HISTORY OF GIVING

YOUR GENEROSITY ALLOWS US TO CONTINUE TO SUPPORT OUR CLIENTS, OUR DOGS, AND OUR COMMUNITIES.

DONORS

A la concept Limited	ESRI China (HK) Limited
Abbott	Ernest & Donald Marketing Communications Limited
Aesop Hong Kong Limited	Exhibition Group Limited
AlfaMedic Limited	Fairton Group
Aon Hong Kong	Food Republic Group
Art Playground Corporation Ltd	Global Capital Investments Limited
Bausch & Lomb (HK) Limited	Goodwill Management Limited
Bayer Healthcare Limited	Halo Public Relations Limited
Best & Prestige Industrial & Logistic Equipment Limited	Hang Seng Bank
Black Dog Consultants	Happy Valley Vet. Clinic And Hospital
Bread & Berry Holdings Limited	Harvard Limited
Career Times Online Limited	HSBC Trustee (HK) Limited
Café de Coral Group Ltd	Hill’s Pet Food(Lee Lung Company Limited)
Centaline Property Agency Limited	Hong Kong Aviation Capital
Convoy Financial Services Limited	Hong Kong Baptist University School of Business
Crocs Hong Kong	Hong Kong Vet Groomers Limited
CSL Limited, 1010	Hysan Development Co. Ltd
C. Y. Lam & Co.	International Society of Transport Aircraft Trading Foundation
Czarina 1964	Infinity Music
Dogaroo Group Limited	
Dogotel Limited	
Dynamic Network Alliances	
EMC	



Acknowledgement

A HISTORY OF GIVING

YOUR GENEROSITY ALLOWS US TO CONTINUE TO SUPPORT OUR CLIENTS, OUR DOGS, AND OUR COMMUNITIES.

DONORS

Jexperience Company Limited

Kentech International Ltd

Lee Hysan Foundation

Lee Lung Company Limited

Lee Theatre

Leung & Wan Solicitors

Lotus Tours Limited

Luk Tin Lap / Tin Age Company

Lush Hong Kong

Oh My Deer

Pacific Ocean Investigations Limited

Robiff Trading Co. Ltd

Ronald Lu & Partners

Rotary Club of Bayview

Rotary Club of Hong Kong

Rotary Club of Shouson Hill

Sedan Chair Charity Fund

Siliconezone

Smart Value Limited

Splunk Company

Stellar Resources Limited

St Matthew's Lutheran School (SMP) Parents

Shun Hing Electronic Trading Co., Ltd

Tingic International Limited

The American Women's Association of Hong Kong (AWA)

The Ebenezer School & Home For The Visually Impaired

The Hong Kong Racehorse Owners Association Charitable Foundation

The Link REIT

The Peninsula Hong Kong

The Pun U District Association of HK

Tingie International Limited

Venture Studios (HK) Limited

Whiskers N Paws

Wonderland Palace Restaurant

Zurich Insurance Company Limited

Zung Fu Company Limited

羅志祥歌迷會

聖公會仁立小學



Acknowledgement

A HISTORY OF GIVING

YOUR GENEROSITY ALLOWS US TO CONTINUE TO SUPPORT OUR CLIENTS, OUR DOGS, AND OUR COMMUNITIES.

SUPPORTERS (COMMERCIAL)

Acorn Veterinary Hospital

Allianz Global Investors GmbH

American Int. Assurance Company (Bermuda) Limited

A Nice Gift (賞茶) Group

AS Production Company

Bakery Café

Black N White

Cafejetaime

Capstone (HK) Limited

C'est la vie

Cheung Kong Group

Choices Fashion

City Bus & NWFB

Concord Hotel

Conrad Hong Kong Hotel

Convoy Financial Services Limited

CooperVision Hong Kong

Czarina 1064

Daihachi Japanese Restaurant

Dear Dogs & Cats

Delifrance (HK) Limited

Diocesan Boy's School

Discovery Bay Management

Dogaroo Group

Doggies & Friends

Dog Island

Dogotel & Spa

DT Communications

Ernest & Donald Marketing Communications Limited

Filters Lane
Grand View Digital

Hang Lung Group

Harvard Add hair Technologies

Harvest Beauty & Fitness Group Limited

Henderson Land Development

Hong Kong Commercial Broadcasting Co. Ltd

Hong Kong Vet Groomers Centre

Italian Tomato

I Study Leaning Center

IVE (Lee Wai Lee)

Joy Lifestyle Event Limited

Just Green

Kau Sai Chau Public Golf Course

Kayaki

KMB



Acknowledgement

A HISTORY OF GIVING

YOUR GENEROSITY ALLOWS US TO CONTINUE TO SUPPORT OUR CLIENTS, OUR DOGS, AND OUR COMMUNITIES.

SUPPORTERS (COMMERCIAL)

Love Forever Pet’s Hospice Care Service

Ming Kee

Miramar Group

MRRM Publishing Limited

MTR Corporation Limited

One Dream Plus

Orrick Herrington & Sutcliffe

Pet Pet Animal Hospital

Pet Pet Never-never Land

Pet Pet Shop

Phoenix Sweets

Pokka Café

Princess

PuraPharm International (HK) Limited

Ramen Champion

Regal Hotel Group

Rolan Chu Studio

Ronald Lu & Partners

Sheung Shui Veterinary Clinic

Sino Group

Specsavers

Super Star Group

Star Ferry Company Limited

Sun Hung Kai Properties Limited

Sweet Tooth

Taste of Asia

The Wharf (Holdings) Limited

Wilson Parking

Yoshinoya Hong Kong

大埔振興

比利時鑽石中心

生活知味

杜記茶餐廳

高流灣火鍋店

第五街真髮系列

麥文記麵家

皇室伯爵犬舍

再見寵兒有限公司

彤彤文具精品店

好麵線四川麻辣米線

為食魚烤石魚專門店



Acknowledgement

A HISTORY OF GIVING

YOUR GENEROSITY ALLOWS US TO CONTINUE TO SUPPORT OUR CLIENTS, OUR DOGS, AND OUR COMMUNITIES.

SUPPORTERS

Agriculture, Fisheries and Conservation
Department
Equal Opportunities Commission
Exhibition Group Limited
Hong Kong Trade Development Council
Leisure and Cultural Services Department
The Hong Kong Council of Social Service

City University of Hong Kong
Extension and Continuing Education for Life
The Hong Kong Polytechnic University
The Chinese University of Hong Kong
The Hong Kong Academy for Performing Arts
The University of Hong Kong

Aberdeen Marina Club
Hong Lok Yuen Country Club
Hong Kong Golf Club
Hong Kong Jockey Club
Japanese Club

Disney Hong Kong
Kadoorie Farm
Noah's Ark Theme Park

Ocean Park

Asia Impaired Golfers Association
Hong Kong Blind Union
Ebenezer School and Home for the Visually
Impaired
Hong Kong Buddhist Society for the Blind
Limited
Hong Kong Network for the Promotion of
Inclusive Society Limited
Hong Kong Society for the Blind
Retina Hong Kong
The Hong Kong Joint Council for People with
Disabilities
The Hong Kong Council of Social Service

Guide Dogs for the Blind Assn. UK
Guiding Eyes for the Blind , New York
International Guide Dog Federation
Guide Dogs Queensland, Australia
Blind Foundation NZ - Guide Dog Services
Guide Dogs For the Blind Inc. USA



Acknowledgement

Celebrities

江美儀

陳彥行

陳道然(蘭子)

黃日華

梁潔華

黃芷晴

陳嘉容

陳敏之

陳凱琳

阮兆祥

何遠東

李泳豪

劉思希

趙永洪

張家瑩

劉家聰

周嘉莉

杜德偉

陳柏宇

方力申

古天祥

黃竣鋒

艾美琦

黃夏蕙

Simon Lee 小肥豬



Acknowledgement

PUPPY RAISERS

Anthony Yiu (Harmony)
Bonnie Chan/Eugenie Ho/Andy Ho (Freda)
Benny Leung (Faith)
Christine Greenberg (Ginny)
Fanny Chan (Bene)
Florence Ho / Leo Ho (Coco)
Florence Barflate (Bella)
Gaby McDonald (Delta, Ginny)
Isabel Sun/Dickson Yuen (Dax)
Jason Miao (Adam)
Jelly Tang/Simon Yuen (Delta)
Lexi Vettichi (Ivy)
Lily Lam (Bella, Eve)
Mabel Ng (Gaga)
Mok Kei Yee/ Erica Cleary (Anna, Dax)
Olive Lam / Eddie Chan (Elsa)
Pearl Sung / Yip Wing Keung (Adam)
Raymond Ngan (Isla)
Sibyl Wong / Ricky Lau (Anna, Coco)
Valerie Wong / Andrew Lam (Charlie)
Wicko Leung (Bene)

Temporary Home

Amy Chau
Anna Mok
Esther Loo / Terry Ng
Fianna Chi
Lo Po Ling / Sunny Lo / Amanda Lo
Louise Schenk/Sebastian H. Schenk
Martha Zambrano
Rosie Mills
Sunny Lo
Wong Siu Ling / Wang Xiao Chuan
Carita Su
Philip Ngan



Public Education

No.	Date	Event name (CHI)	No. of Participants	Education	Interview	Marketing	Fundraising
1	2015.01.05	聖文嘉幼稚園	54	v			
2	2015.01.17	新生精神康復會	25	v			
3	2015.01.27	北角官立小學(雲景道)	330	v			
4	2015.01.24	寄養家庭講座	30	v			
5	2015.01.28	心光盲人院暨學校	60	v			
6	2015.02.04	華德學校	335	v			
7	2015.02.05	香港會議展覽中心	35	v			
8	2015.02.11	華德學校	335	v			
9	2015.02.13-15	Hong Kong Pet Show 2015	10000				v
10	2015.03.05	八鄉中心小學	27	v			
11	2015.03.05	AWA Art Sale	1000				v
12	2015.03.06	聖公會聖彼得小學	200	v			
13	2015.03.10	Christ Church Kindergarten	160	v			
14	2015.03.14	Volunteer training - Speaker	30	v			
15	2015.03.18	救世軍大窩口幼兒學校	35	v			
16	2015.03.19	RTHK x HKCSS interview	Public Media		v		
17	2015.03.20	浸信會培理學校	136	v			
18	2015.03.21	Volunteer training - Speaker	30	v			
19	2015.03.21	Puppy Group Training	20	v			
20	2015.03.27	上水惠州幼稚園(分校)	120	v			
21	2015.03.28-29	Joy Lifestyle Weekend Bazaar	600	v			
22	2015.03.30	陳瑞祺(喇沙)小學 by Infinity Music Workshop	35	v			
23	2015.04.10	嶺南大學社區學院	300	v			
24	2015.04.13	Meeting cum Puppy Training at Kowloon Motor Bus	30	v			
25	2015.04.16	樂善堂梁錄瑤書院	250	v			
26	2015.04.18	寄養家庭講座	30	v			
27	2015.04.19	Concept in the Dark	50	v			
28	2015.04.22	Café de Coral CSR Project Naming Ceremony	Public Media			v	
29	2015.04.24	Guide Dog Life Style Workshop at Hong Kong Buddhist Society for the Blind	70	v			
30	2015.04.24	Aesop event education puppy raising	300	v			
31	2015.04.24	南方都市報Interview	Public Media		v		
32	2015.04.24	Puppy Group Training	20	v			
33	2015.04.29	筲箕灣崇真幼兒學校	55	v			
34	2015.04.29	Aesop Charity Campaign	100				v
35	2015.05.04	鄰舍輔導會東欣幼兒園	24	v			
36	2015.05.07	Mulberry Tree	20	v			
37	2015.05.09	Booklaunch of Guide Dog Deanna's 2nd Book	Public Media			v	
38	2015.05.16	香港盲人輔導會 - 「與導盲犬為伴」工作坊 Lifestyle Workshop	70	v			
39	2015.05.16	香港中華基督教青年會觀塘會所	15	v			
40	2015.05.21	基督教香港信義會馬鞍山長者地區中心	40	v			
41	2015.05.30	Puppy Group Training	20	v			
42	2015.05.30	民安少年團A中隊4分隊組群 - 導盲犬講座	30	v			
43	2015.06.04	Animal-assisted therapy conference cum workshop	Public Media	v			
44	2015.06.04	香港國際蒙特梭利學校(愉景灣)	40	v			
45	2015.06.05	Animal-assisted therapy conference cum workshop	Public Media	v			
46	2015.06.05	香港國際蒙特梭利學校(中環)	20	v			
47	2015.06.09	Bayer 拜耳醫療保健有限公司 - 導盲犬講座	40	v			
48	2015.06.13	Lok Fu Plaza event - 「愛心引路」導盲幼犬夏日「樂」共融	700			v	
49	2015.06.19	黃大仙官立小學	380	v			
50	2015.06.19-21	Premium Pet Supplies & Aquarium Equipment Expo 2015	10000				v
51	2015.06.21	Emax pet model contest event	Public Media			v	
52	2015.06.25	Sino Group of Hotels - Island Pacific Hotel	50	v			
53	2015.06.27	寄養家庭講座	30	v			
54	2015.06.28	Puppy Group Training	20	v			
55	2015.06.30	Seminar for Infinity Music Workshop	55	v			
56	2015.07.06	田家炳中學	80	v			
57	2015.07.07	田家炳中學	80	v			
58	2015.07.10	中華基督教會望覺啟愛學校	57	v			
59	2015.07.14	庇理羅士女子中學	300	v			
60	2015.07.15	香港基督教女青年會 賽馬會樂華綜合社會服務處	30	v			
61	2015.07.16-17	CDC office HKGDA product sale	400				v
62	2015.07.19	中華基督教會公理堂	70	v			
63	2015-July-19 (Sun)	Interview - Radio - RTHK1	Public Media		v		

Public Education

No.	Date	Event name (CHI)	No. of Participants	Education	Interview	Marketing	Fundraising
64	2015.07.22	香港中華基督教青年會藍田會所	20	v			
65	2015.07.25	Puppy Group Training	20	v			
66	2015-July-28 (Tue)	Interview - Radio - D100	Public Media		v		
67	2015-Aug-01 (Sat)	後和建築工程有限公司 - 導盲犬講座	20	v			
68	2015.08.04	CableTV interview	Public Media		v		
69	2015.08.10	NowTV interview	Public Media		v		
70	2015.08.11	香港基督教女青年會 賽馬會樂華綜合社會服務處	25	v			
71	2015.08.13	Carnival of Animals, presented by Infinity Music Workshop	1200				v
72	2015-Aug-13 (Thu)	Tenant Academy 商戶學堂 interview	Public Media		v		
73	2015.08.15	樂心舍	15	v			
74	2015-Aug-17 (Mon)	NowTV interview	Public Media		v		
75	2015.08.18	香港青少年服務處賽馬會粉嶺綜合青少年服務中心	10	v			
76	2015-Aug-18 (Tue)	CableTV interview	Public Media		v		
77	2015-Aug-20 (Thur)	Interview - Newspaper - on.cc	Public Media		v		
78	2015.08.21	知識力量	30	v			
79	2015.08.22	香港遊樂場協會賽馬會青衣青少年綜合服務中心	28	v			
80	2015-Aug-25 (Tue)	The Little Big Star Show	10000				v
81	2015.08.28	Bayer 拜耳醫療保健有限公司 - 導盲犬講座	30	v			
82	2015.08.29	Puppy Group Training	20	v			
83	2015-Sep-2 (Wed)	Interview - Newspaper - Headline Daily	Public Media		v		
84	2015-Sep-11 (Fri)	Interview - Magazine - Dogs Magazine	Public Media		v		
85	2015-Sep-12 (Sat)	Interview - Radio - Teen Power RTHK	Public Media		v		
86	2015-Sep-21 (Mon)	Interview - Magazine - Face	Public Media		v		
87	2015-Sep-22 (Tue)	Interview - WebTV - DBCmm	Public Media		v		
88	2015-Sep-23 (Wed)	雅居物業管理有限公司 - 利安邨 - 導盲犬講座	20	v			
89	2015-Sep-24 (Thur)	Interview - Newspaper - 星島日報 Sing Tao Daily	Public Media		v		
90	2015-Sep-29 (Tue)	Interview - Newspaper - 星島日報 Sing Tao Daily	Public Media		v		
91	2015-Oct-1 (Thur)	Interview - Magazine - JiuJik Magazine	Public Media		v		
92	2015-Oct-07 (Wed)	地利亞英文小學暨幼稚園 - 導盲犬講座	222	v			
93	2015-Oct-09 (Fri)	東華三院鮑山學校 - 導盲犬講座	750	v			
94	2015-Oct-9 (Fri)	Interview - TV - Cable TV	Public Media		v		
95	2015.10.10	香港耀能協會東九龍家長資源中心	30	v			
96	2015.10.10	寄養家庭講座	30	v			
97	2015-Oct-12 (Mon)	Orchestra concert at St John Cathedral	400				v
98	2015-Oct-18 (Sun)	Fung Yuen Butterfly Reserve	4000	v			
99	2015-Oct-20 (Tue)	樂善堂梁詠瑤書院 - 導盲犬講座	100	v			
100	2015-Oct-20 (Tue)	Interview - Newspaper - Oriental Daily	Public Media		v		
101	2015-Oct-22 (Thu)	Coopervision – seminar	30	v			
102	2015-Oct-30 (Fri)	Interview - TV - D100	Public Media		v		
103	2015-Nov-2 (Mon)	Interview - Web Radio - 熱血時報	Public Media		v		
104	2015-Nov-6 (Fri)	Interview - Newspaper - 中新社	Public Media		v		
105	2015-Nov-8 (Sun)	Millennium City 5 Exhibition	4000	v			
106	2015-Nov-10 (Tue)	寧波第二中學 - 導盲犬講座	30	v			
107	2015-Nov-12 (Thur)	Interview - Newspaper - SCMP	Public Media		v		
108	2015-Nov-13 (Fri)	Best Rubber Products Limited - seminar	30	v			
109	2015-Nov-15 (Sun)	成長希望基金會 - 導盲犬講座	30	v			
110	2015-Nov-16 (Mon)	Interview - Magazine - Pets Magazine	Public Media			v	
111	2015-Nov-18 (Wed)	東華三院姚達之紀念小學 - 導盲犬講座	150	v			
112	2015-Nov-21 (Sat)	香港遊樂場協會-彩德青少年綜合服務中心 - 導盲犬講座	20	v			
113	2015-Nov-23 (Mon)	再生會 - 導盲犬講座	20	v			
114	2015-Nov-24 (Tue)	Harbour City - seminar	30	v			
115	2015-Nov-27 (Fri)	五旬節林漢光中學 - 導盲犬講座	100	v			
116	2015-Dec-10 (Thur)	Interview - Radio - Metro Radio	Public Media		v		
117	2015-Dec-27 (Sun)	Guide Dog Family Fun Day	3000				v
118	2016-Jan-10 (Sun)	Link Paws at the sea fundraising event	3000				v
119	2016-Jan-16-17 (Sat)	Link Paws at the sea fundraising event	7000				v
120	2016-Jan-24 (Sun)	CHARITY WALK 2016	200				v
121	2016-Feb-19 to 21 (Fri)	PET SHOW	10000				v
122	2016-Feb-28 (Sun)	HK.WeCare	3000			v	
123	2016-Mar-29 (Tue)	Disneyland Graduation Ceremony	200			v	
124	2016-Jan-11 (Mon)	Seminar: 基督教香港信義會信愛學校	330	v			
125	2016-Jan-13 (Wed)	Seminar - PolyU exhibition	100	v			
126	2016-Jan-14 (Thur)	Seminar - PolyU exhibition	100	v			

Public Education

No.	Date	Event name (CHI)	No. of Participants	Education	Interview	Marketing	Fundraising
127	2016-Jan-14 (Thur)	Workshop - The Society of Rehabilitation and Crime Prevention	20	v			
128	2016-Jan-16 (Sat)	Seminar - HK International School	40	v			
129	2016-Jan-18 (Mon)	Interview - TV - Cable TV	Public Media		v		
130	2016-Jan-21 (Thur)	Seminar- MTR Telford Plaza	30	v			
131	2016-Jan-24 (Sun)	Interview - WebTV - 100 Most	Public Media		v		
132	2016-Jan-28 (Thur)	Retina HK luncheon and workshop	50	v			
133	2016-Jan-29 (Fri)	HKSB Lifestyle workshop	50	v			
134	2016-Jan-29 (Fri)	Seminar[School-secondary] -聖士提反書院	400	v			
135	2016-Feb-1 (Mon)	Interview - Newspaper - Oriental Daily	Public Media		v		
136	2016-Feb-18 (Thur)	GD Lifestyle Workshop	50	v			
137	2016-Feb-19 (Fri)	Interview - TV - 中新社	Public Media		v		
138	2016-Feb-24 (Wed)	Seminar- Sacred Heart Canossian School	157	v			
139	2016-Feb-26 (Fri)	seminar- 天水圍伯裘書院 / 循道衛理楊震社會服務處 合辦	30-40	v			
140	2016-Mar-1 (Tue)	Seminar - Civic Education talks of Integrated Learning Programme (ILP) 嶺南大學	100	v			
141	2016-Mar-4 (Fri)	Seminar - Working Family Allowance Office (WFSFAA)	100	v			
142	2016-Mar-7 (Mon)	Seminar - Hong Kong Institute of Education 香港教育學院	75	v			
143	2016-Mar-8 (Tue)	Seminar - 彩雲聖若瑟小學	150	v			
144	2016-Mar-12 (Sat)	Seminar - 小童群益會陽光家庭計劃	40	v			
			76,975	95	29	7	13
			Approx. no. of audience	Sub-total			

CONTACT US

Address: Room 46, Floor 11, Block F,
Wah Lok Industrial Centre,
31-35 Shan Mei Street,
Fotan, New Territories

Tel: 3188 1736

Fax: 3188 3647

E-mail: info@guidedogs.org.hk

Website: www.guidedogs.org.hk

Facebook: HKGDA
HKGDAPUPPYCLUB

Guide dog Facebook: deannaGD
nana.guidedog

Registration Charity Number: 91/11219

Our official website provides two types of fund raising channels. Making online donation via the link http://www.guidedogs.org.hk/en_donate.php, or purchasing our saleable items via the link http://www.guidedogs.org.hk/en_shop.php.



All our services presently are delivered free-of-charge to clients in need.